



TRULINK™

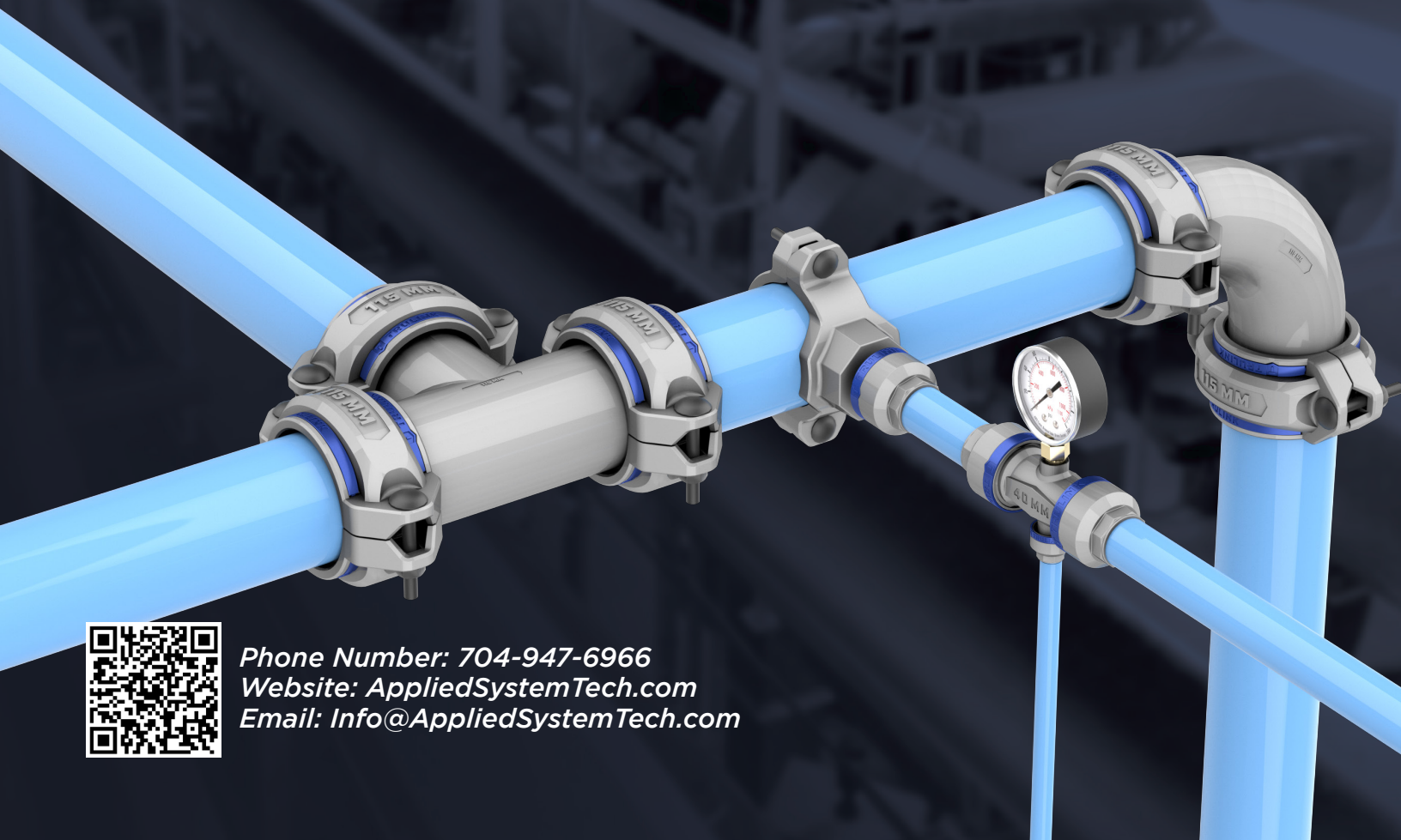
DESIGNED, ENGINEERED, & MANUFACTURED BY **AST**



American Pipe. American Engineered. American Assembled.

PARTS BOOK

VOLUME 1.2



Phone Number: 704-947-6966
Website: AppliedSystemTech.com
Email: Info@AppliedSystemTech.com

TABLE OF CONTENTS

TECHNICAL SPECIFICATIONS..... 3

PUSH-TO-CONNECT TUBING 5

PUSH-TO-CONNECT FITTINGS 6

PUSH-TO-CONNECT TOOLS & ACCESSORIES 9

CLAMP-TO-CONNECT TUBING..... 18

CLAMP-TO-CONNECT FITTINGS 19

CLAMP-TO-CONNECT TOOLS & ACCESSORIES 24

TECHNICAL SPECIFICATIONS

PUSH TO CONNECT

MARINE GRADE
ALUMINUM



COMPONENT PARTS & MATERIALS

1	BODY A380 Aluminum, Powder Coated	4	SAFETY RING: Polymer
2	NUT: A380 Aluminum, Powder Coated	5	Clamping Washer AISI 304 Stainless Steel
3	PLUG AISI 304 Stainless Steel (Optional, Ported, Straight Union Connector)	6	Double O-ring Seals HBNR(Hydrogenated Buna Nitrile) Viton (Available Upon Request)

COMPONENT TECHNICAL DATA

Temperature	Minimum: -4°F [-20°C] Maximum: Viton 300°F [149°C] Maximum: Nitrile 176°F [80°C]
Pressure	Minimum: -29.6Hg [-0.99 bar] Maximum: 230psi [15.8 bar]
Fire Resistance	System does not stoke or propagate fires
Compatibility	Compressed Air, Vacuum, Inert Gases
Male Threads	National pipe thread ISO 228
Female Threads	National pipe thread ISO 228

COMPONENT PARTS & MATERIALS

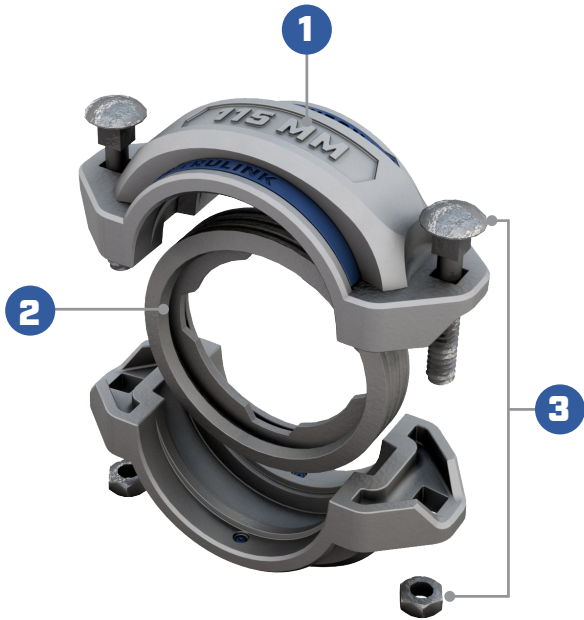
1	BODY: A380 Aluminum, Powder Coated
2	SEAL: Buna N, Viton (Available Upon Request)
3	BOLTS: Carriage / Grade 5 / Zinc Plated

COMPONENT TECHNICAL DATA

Temperature	Minimum: -4°F [-20°C] Maximum: Viton 300°F [149°C] Maximum: Nitrile 176°F [80°C]
Pressure	Minimum: -29.6Hg [-0.99 bar] Maximum: 230psi [15.8 bar]
Fire Resistance	System does not stoke or propagate fires
Compatibility	Compressed Air, Vacuum, Inert Gases
Male Threads	National pipe thread ISO 228
Female Threads	National pipe thread ISO 228

CLAMP TO CONNECT

MARINE GRADE
ALUMINUM



TECHNICAL SPECIFICATIONS (Continued)

TUBING TECHNICAL DATA			
Pressure: psi/bar	230psi (15.8 bar)	Thermal Conductivity at 77°F	209 W/m-k -1450 BTU-in/hr
Tubing Length	16ft	Expansion Coefficient (Avg @ 68° to 212°F per°F)	23.4 um/m-°C / 13 uin/in-°F
Extruded Aluminum	Aluminum 6063/AA6063-T5	Heat Capacity	0.9 J/g-°C / 0.215 BTU-in/ hr-ft ²
Chemical Composition	Si: 0.2 - 0.6 - Mg: 0.45 ÷ 0.9 - Fe: 0.35	Ultimate Tensile Strength	21.0 ksi / 21,000 psi
Designations	AA 6063 Alloy	Modulus of Elasticity	68.9GPa / 10,000 ksi
Heat Treatment	Thermal Heat Treat "T5"	Tensile Strength	15.0 ksi min / 15,000 psi
Surface Treatment	PPG Duracron Protective Coating	Brinell Hardness	60 ÷ 70 HB
Density	2.7 g/cc - 0.0975 in/in ³	Melting Point	615°C to 650°C / 1140-1210°F
Electrical Resistivity at 68°F	19 ohm-Cir. Mil/Foot	Percentage Elongation	8%



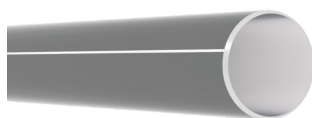
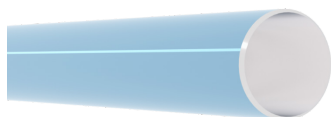
WARNING:

TruLink Piping Systems should not be used for flammable gases, fluids, or wet or dry media without consulting our factory engineers. Please call us at 704-947-6966 to discuss any application other than compressed air, vacuum, inert gases, condensate, mineral oil or glycol.

STANDARDS & APPROVALS:

- RoHS
- ASTM B221
- ASTM B308, B308M
- ASTM B429, B429M
- ASTM B241, B241M
- CRN
- ASME B31.1, B31.3
- ISO 8573
- Food Grade Compliant

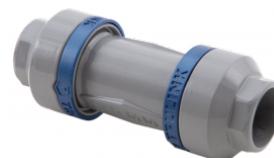




Description	Part Number
20mm - Tubing Blue (16ft Length)	TP1-20-BLUE
25mm - Tubing Blue (16ft Length)	TP1-25-BLUE
32mm - Tubing Blue (16ft Length)	TP1-32-BLUE
40mm - Tubing Blue (16ft Length)	TP1-40-BLUE
50mm - Tubing Blue (16ft Length)	TP1-50-BLUE
63mm - Tubing Blue (16ft Length)	TP1-63-BLUE
20mm - Tubing Black (16ft Length)	TP1-20-BLACK
25mm - Tubing Black (16ft Length)	TP1-25-BLACK
32mm - Tubing Black (16ft Length)	TP1-32-BLACK
40mm - Tubing Black (16ft Length)	TP1-40-BLACK
50mm - Tubing Black (16ft Length)	TP1-50-BLACK
63mm - Tubing Black (16ft Length)	TP1-63-BLACK
20mm - Tubing Grey (16ft Length)	TP1-20-GREY
25mm - Tubing Grey (16ft Length)	TP1-25-GREY
32mm - Tubing Grey (16ft Length)	TP1-32-GREY
40mm - Tubing Grey (16ft Length)	TP1-40-GREY
50mm - Tubing Grey (16ft Length)	TP1-50-GREY
63mm - Tubing Grey (16ft Length)	TP1-63-GREY
20mm - Tubing Green (16ft Length)	TP1-20-GREEN
25mm - Tubing Green (16ft Length)	TP1-25-GREEN
32mm - Tubing Green (16ft Length)	TP1-32-GREEN
40mm - Tubing Green (16ft Length)	TP1-40-GREEN
50mm - Tubing Green (16ft Length)	TP1-50-GREEN
63mm - Tubing Green (16ft Length)	TP1-63-GREEN
20mm - TruLink Tubing Blue INKED (16ft Length)	TP1-20-BLUE-INK
25mm - TruLink Tubing Blue INKED (16ft Length)	TP1-25-BLUE-INK
32mm - TruLink Tubing Blue INKED (16ft Length)	TP1-32-BLUE-INK
40mm - TruLink Tubing Blue INKED (16ft Length)	TP1-40-BLUE-INK
50mm - TruLink Tubing Blue INKED (16ft Length)	TP1-50-BLUE-INK
63mm - TruLink Tubing Blue INKED (16ft Length)	TP1-63-BLUE-INK



Description	Part Number
Straight Male Adapter 20mm x 1/2" MNPT	TP3-20-08M
Straight Male Adapter 20mm x 3/4" MNPT	TP3-20-12M
Straight Male Adapter 25mm x 3/4" MNPT	TP3-25-12M
Straight Male Adapter 25mm x 1" MNPT	TP3-25-16M
Straight Male Adapter 32mm x 1" MNPT	TP3-32-16M
Straight Male Adapter 32mm x 1-1/2" MNPT	TP3-32-24M
Straight Male Adapter 40mm x 1-1/2" MNPT	TP3-40-24M
Straight Male Adapter 50mm x 1-1/2" MNPT	TP3-50-24M
Straight Male Adapter 50mm x 2" MNPT	TP3-50-32M
Straight Male Adapter 63mm x 2" MNPT	TP3-63-32M
Straight Male Adapter 63mm x 2 -1/2" MNPT	TP3-63-40M
Straight Female Adapter 20mm x 1/2" FNPT	TP3-20-08F
Straight Female Adapter 25mm x 1" FNPT	TP3-25-16F
Straight Female Adapter 32mm x 1" FNPT	TP3-32-16F
Straight Female Adapter 40mm x 1 -1/2" FNPT	TP3-40-24F
Straight Female Adapter 50mm x 2" FNPT	TP3-50-32F
Straight Union Connector 20mm	TP2-20
Straight Union Connector 25mm	TP2-25
Straight Union Connector 32mm	TP2-32
Straight Union Connector 40mm	TP2-40
Straight Union Connector 50mm	TP2-50
Straight Union Connector 63mm	TP2-63



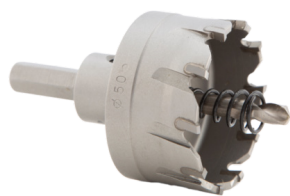


Description	Part Number
Straight Union Connector 20mm w/ 1/2" FNPT Ports	TP2-20-08F
Straight Union Connector 25mm w/ 1/2" FNPT Ports	TP2-25-08F
Straight Union Connector 32mm w/ 1/2" FNPT Ports	TP2-32-08F
Straight Union Connector 40mm w/ 1/2" FNPT Ports	TP2-40-08F
Straight Union Connector 50mm w/ 1/2" FNPT Ports	TP2-50-08F
Straight Union Connector 63mm w/ 1/2" FNPT Ports	TP2-63-08F
90° Union Elbow 20mm	TP6-20
90° Union Elbow 25mm	TP6-25
90° Union Elbow 32mm	TP6-32
90° Union Elbow 40mm	TP6-40
90° Union Elbow 50mm	TP6-50
90° Union Elbow 63mm	TP6-63
90° Street Elbow 20mm x 1/2" MNPT	TP6-20-08M
90° Street Elbow 20mm x 3/4" MNPT	TP6-20-12M
90° Street Elbow 25mm x 3/4" MNPT	TP6-25-12M
90° Street Elbow 25mm x 1" MNPT	TP6-25-16M
90° Street Elbow 32mm x 1" MNPT	TP6-32-16M
90° Street Elbow 40mm x 1-1/2" MNPT	TP6-40-24M
90° Street Elbow 50mm x 1-1/2" MNPT	TP6-50-24M
90° Street Elbow 50mm x 2" MNPT	TP6-50-32M
90° Street Elbow 63mm x 2" MNPT	TP6-63-32M
90° Street Elbow 63mm x 2-1/2" MNPT	TP6-63-40M
45° Union Elbow 20mm	TP8-20
45° Union Elbow 25mm	TP8-25
45° Union Elbow 32mm	TP8-32
45° Union Elbow 40mm	TP8-40
45° Union Elbow 50mm	TP8-50
45° Union Elbow 63mm	TP8-63



Description	Part Number
Junction Tee 20mm	TP9-20
Junction Tee 25mm	TP9-25
Junction Tee 32mm	TP9-32
Junction Tee 40mm	TP9-40
Junction Tee 50mm	TP9-50
Junction Tee 63mm	TP9-63
Outlet Reducing Tee w/ Water Trap 20mm x 20mm	TP10-20-20
Outlet Reducing Tee w/ Water Trap 25mm x 20mm	TP10-25-20
Outlet Reducing Tee w/ Water Trap 32mm x 20mm	TP10-32-20
Outlet Reducing Tee w/ Water Trap 32mm x 25mm	TP10-32-25
Outlet Reducing Tee w/ Water Trap 40mm x 20mm	TP10-40-20
Outlet Reducing Tee w/ Water Trap 40mm x 25mm	TP10-40-25
Outlet Reducing Tee w/ Water Trap 50mm x 20mm	TP10-50-20
Outlet Reducing Tee w/ Water Trap 50mm x 25mm	TP10-50-25
Outlet Reducing Tee w/ Water Trap 50mm x 32mm	TP10-50-32
Outlet Reducing Tee w/ Water Trap 63mm x 20mm	TP10-63-20
Outlet Reducing Tee w/ Water Trap 63mm x 25mm	TP10-63-25
Outlet Reducing Tee w/ Water Trap 63mm x 32mm	TP10-63-32
Outlet Saddle Clamp Reducers 32mm to 20mm	TP13-32-20
Outlet Saddle Clamp Reducers 32mm to 25mm	TP13-32-25
Outlet Saddle Clamp Reducers 40mm to 20mm	TP13-40-20
Outlet Saddle Clamp Reducers 40mm to 25mm	TP13-40-25
Outlet Saddle Clamp Reducers 50mm to 20mm	TP13-50-20
Outlet Saddle Clamp Reducers 50mm to 25mm	TP13-50-25
Outlet Saddle Clamp Reducers 63mm to 20mm	TP13-63-20
Outlet Saddle Clamp Reducers 63mm to 25mm	TP13-63-25
Outlet Saddle Clamp Reducers 25mm x 1/2" FNPT	TP13-25-08F
Outlet Saddle Clamp Reducers 32mm x 1/2" FNPT	TP13-32-08F
Outlet Saddle Clamp Reducers 40mm x 1/2" FNPT	TP13-40-08F
Outlet Saddle Clamp Reducers 50mm x 1/2" FNPT	TP13-50-08F
Outlet Saddle Clamp Reducers 63mm x 1/2" FNPT	TP13-63-08F




Description
Part Number

Saddle Drill Bit 25mm to 32mm (Drill Jig Required)	TP-Drill Bit 25-32
Saddle Drill Bit 40mm to 63mm (Drill Jig Not Required)	TP-Drill Bit 40-63

Saddle Drill Jig 25mm & 32mm	TP-Drill Jig 25-32
------------------------------	--------------------

Plug Cap 20mm	TP20-20
Plug Cap 25mm	TP20-25
Plug Cap 32mm	TP20-32
Plug Cap 40mm	TP20-40
Plug Cap 50mm	TP20-50
Plug Cap 63mm	TP20-63
Reducing Stem Adapter 25mm x 20mm	TP21-25-20
Reducing Stem Adapter 32mm x 20mm	TP21-32-20
Reducing Stem Adapter 32mm x 25mm	TP21-32-25
Reducing Stem Adapter 40mm x 20mm	TP21-40-20
Reducing Stem Adapter 40mm x 25mm	TP21-40-25
Reducing Stem Adapter 40mm x 32mm	TP21-40-32
Reducing Stem Adapter 50mm x 25mm	TP21-50-25
Reducing Stem Adapter 50mm x 32mm	TP21-50-32
Reducing Stem Adapter 50mm x 40mm	TP21-50-40
Reducing Stem Adapter 63mm x 40mm	TP21-63-40
Reducing Stem Adapter 63mm x 50mm	TP21-63-50



Description	Part Number
Stem Adapter 20mm x 1/2" FNPT	TP22-20-08F
Stem Adapter 20mm x 1/2" MNPT	TP22-20-08M
Stem Adapter 20mm x 3/4" MNPT	TP22-20-12M
Stem Adapter 25mm x 1/2" MNPT	TP22-25-08M
Stem Adapter 25mm x 3/4" MNPT	TP22-25-12M
Stem Adapter 25mm x 1" MNPT	TP22-25-16M
Stem Adapter 32mm x 1" MNPT	TP22-32-16M
Stem Adapter 32mm x 1-1/2" MNPT	TP22-32-24M
Stem Adapter 40mm x 1-1/2" MNPT	TP22-40-24M
Stem Adapter 50mm x 1-1/2" MNPT	TP22-50-24M
Stem Adapter 50mm x 2" MNPT	TP22-50-32M
Stem Adapter 63mm x 2" MNPT	TP22-63-32M
Stem Adapter 63mm x 2-1/2" MNPT	TP22-63-40M
Ball Valve 20mm Tube-to-Tube (Includes Valve and 2 Threaded Adapters)	TP25-20
Ball Valve 25mm Tube-to-Tube (Includes Valve and 2 Threaded Adapters)	TP25-25
Ball Valve 32mm Tube-to-Tube (Includes Valve and 2 Threaded Adapters)	TP25-32
Ball Valve 40mm Tube-to-Tube (Includes Valve and 2 Threaded Adapters)	TP25-40
Ball Valve 50mm Tube-to-Tube (Includes Valve and 2 Threaded Adapters)	TP25-50
Ball Valve 63mm Tube-to-Tube (Includes Valve and 2 Threaded Adapters)	TP25-63





Description	Part Number
1 Port MAN-08F	TPMFD-1-08F
1 Port MAN-12F	TPMFD-1-12F
2 Port MAN-08F	TPMFD-2-08F
2 Port MAN-12F	TPMFD-2-12F
4 Port MAN-08F	TPMFD-4-08F
4 Port MAN-12F	TPMFD-4-12F
1 Port MAN-20mm	TPMFD-1-20
1 Port MAN-25mm	TPMFD-1-25
2 Port MAN-20mm	TPMFD-2-20
2 Port MAN-25mm	TPMFD-2-25
4 Port MAN-20mm	TPMFD-4-20
4 Port MAN-25mm	TPMFD-4-25
1 Port MAN VLV-20mm	TPMFD-1-V-20
1 Port MAN VLV-25mm	TPMFD-1-V-25
2 Port MAN VLV-20mm	TPMFD-2-V-20
2 Port MAN VLV-25mm	TPMFD-2-V-25
4 Port MAN VLV-20mm	TPMFD-4-V-20
4 Port MAN VLV-25mm	TPMFD-4-V-25
Plug 1/2" NPT	PA-MFD-HEX PLUG
Ball Valve, Lockable 1/2" FNPT	TP26-08F
Ball Valve, Lockable 3/4" FNPT	TP26-12F
Ball Valve, Lockable 1" FNPT	TP26-16F
Ball Valve Lockable 1-1/4" FNPT	TP26-20F
Ball Valve, Lockable 1-1/2" FNPT	TP26-24F
Ball Valve, Lockable 2" FNPT	TP26-32F
Ball Valve, Lockable 2-1/2" FNPT	TP26-40F



Description	Part Number
3/8" MxF Ball Valve	TPMF-06-06
1/2" FxF Ball Valve	TPFF-08-08
1/2" MxF Ball Valve	TPMF-08-08
Lockable Exhausting, Safety Valve 1/2" FNPT	TP-IV-50-08F
Lockable Exhausting, Safety Valve 3/4" FNPT	TP-IV-75-12F
Lockable Exhausting, Safety Valve 1" FNPT	TP-IV-100-16F
Silencer, (Fits Exhausting Safety Valve TP-IV-50-08F)	TP-SIL-03
Silencer, (Fits Exhausting Safety Valve TP-IV-75-12F & TP-IV-100-16F)	TP-SIL-04
Bracket, Strut 20mm /Pack 10	TP-810-20-PK10
Bracket, Strut 25mm /Pack 10	TP-810-25-PK10
Bracket, Strut 32mm /Pack 10	TP-810-32-PK10
Bracket, Strut 40mm /Pack 10	TP-810-40-PK10
Bracket, Strut 50mm /Pack 10	TP-810-50-PK10
Bracket, Strut 63mm /Pack 10	TP-810-63-PK10
Spacer Kit, 1"x 3"x1/2" thk (Pack of 10)	TP-SPACER-PK10
Bracket, Hanging 20mm & 25mm (each)	TP-820-20-25
Bracket, Hanging 32mm (each)	TP-820-32
Bracket, Hanging 40mm (each)	TP-820-40
Bracket, Hanging 50mm (each)	TP-820-50
Bracket, Hanging 63mm (each)	TP-820-63





Description

Part Number

 Wire Hanger 15ft Lengths x pk of 10 (1/4" thread)
 (Use w/ Bracket, Strut)

TP-831-04-PK10

 Wire Hanger 15ft Lengths x pk of 10 (3/8" Thread)
 (Use w/ Bracket, Hanging)

TP-831-06-PK10



Bracket, Wall 20mm (each)

TP-915-20

Bracket, Wall 25mm (each)

TP-915-25

Bracket, Wall 32mm (each)

TP-915-32

Bracket, Wall 40mm (each)

TP-915-40

Bracket, Wall 50mm (each)

TP-915-50

Bracket, Wall 63mm (each)

TP-915-63



Quick Coupler, Industrial Socket, 1/4" MNPT

TP-91-04M

Quick Coupler, Industrial Socket, 3/8" MNPT

TP-91-06M

Quick Coupler, Industrial Socket, 1/2" MNPT

TP-91-08M



Quick Coupler, Industrial Socket, 1/4" FNPT

TP-92-04F

Quick Coupler, Industrial Socket, 3/8" FNPT

TP-92-06F

Quick Coupler, Industrial Socket, 1/2" FNPT

TP-92-08F



Quick Coupler, Industrial Socket, 1/4" Hose Barb

TP-93-04HB

Quick Coupler, Industrial Socket, 3/8" Hose Barb

TP-93-06HB

Quick Coupler, Industrial Socket, 1/2" Hose Barb

TP-93-08HB



Safety Coupler, Industrial Socket, 1/4" Body, 1/2" MNPT

TP-97-08M

Safety Coupler, Industrial Socket, 1/4" Body, 1/2" FNPT

TP-97-08F



Plug, 1/4" MNPT

TP-94-04M

Plug, 3/8" MNPT

TP-94-06M

Plug, 1/2" MNPT

TP-94-08M

Plug, 1/4" FNPT

TP-95-04F

Plug, 3/8" FNPT

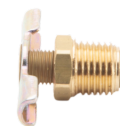
TP-95-06F

Plug, 1/2" FNPT

TP-95-08F



Description	Part Number
Plug, 1/4" Hose Barb	TP-96-04HB
Plug, 3/8" Hose Barb	TP-96-06HB
Plug, 1/2" Hose Barb	TP-96-08HB
Petcock Drain 1/4" MNPT	TP-PC-04M
Petcock Drain 1/2" MNPT	TP-PC-08M
Pressure Gauge 1/4" NPT	TP-GAUGE-04
Pressure Gauge 1/2" NPT	TP-GAUGE-08
Bushing w/ Hex, 1/2" MNPT x 1/4" FNPT	TPB-08-04
Bushing w/ Hex, 1/2" MNPT x 3/8" FNPT	TPB-08-06
Bushing w/ Hex, 3/4" MNPT x 1/2" FNPT	TPB-12-08
Bushing w/ Hex, 1" MNPT x 3/4" FNPT	TPB-16-12
Nipple w/ Hex 1/2" MNPT x 1/2" MNPT	TPN-08-08
Nipple w/ Hex 3/4" MNPT x 3/4" MNPT	TPN-12-12
Reducer Nipple w/ Hex 1/2" MNPT x 3/8" MNPT	TPN-08-06
Reducer Nipple w/ Hex 1" MNPT x 3/4" MNPT	TPN-16-12
NPT Threaded Union 1/2" FNPT	TPU-08-08
NPT Threaded Union 3/4" FNPT	TPU-12-12
NPT Threaded Union 1" FNPT	TPU-16-16
NPT Threaded Union 1-1/2" FMPT	TPU-24-24
NPT Threaded Union 2" FNPT	TPU-32-32
NPT Threaded Union 2-1/2" FNPT	TPU-40-40




Description
Part Number

Beam Clamp 3/8"

TP-860-06



20mm Nitrile O-Ring (Pack 12)

TP-ORING-20 PK-12

25mm Nitrile O-Ring (Pack 12)

TP-ORING-25 PK-12

32mm Nitrile O-Ring (Pack 12)

TP-ORING-32 PK-12

40mm Nitrile O-Ring (Pack 12)

TP-ORING-40 PK-12

50mm Nitrile O-Ring (Pack 12)

TP-ORING-50 PK-12

63mm Nitrile O-Ring (Pack 12)

TP-ORING-63 PK-12

20mm Viton O-Ring (Pack 12)

TP-ORING-V-20 PK-12

25mm Viton O-Ring (Pack 12)

TP-ORING-V-25 PK-12

32mm Viton O-Ring (Pack 12)

TP-ORING-V-32 PK-12

40mm Viton O-Ring (Pack 12)

TP-ORING-V-40 PK-12

50mm Viton O-Ring (Pack 12)

TP-ORING-V-50 PK-12

63mm Viton O-Ring (Pack 12)

TP-ORING-V-63 PK-12



Tube Cutter 20mm - 63mm

TP-Tube Cutter



Drill Adapter Deburring Tool 14mm - 50mm

TP - Drill Adapter- RM

Description	Part Number
Drill Adapter Deburring Tool 63mm	TP-Drill Adapter-DB
Depth Marking Gauge 20mm - 63mm	TP-Depth-Gauge
Wrench Set 20mm/25mm (2 Double Ended Wrenches)	TP-Wrench 20-25
Wrench Set 20mm/32mm (2 Double Ended Wrenches)	TP-Wrench 20-32
Wrench Set 20mm/50mm (2 Double Ended Wrenches)	TP-Wrench 20-40
Wrench Set 20mm/50mm (2 Double Ended Wrenches)	TP-Wrench 20-50
Wrench Set 20mm/63mm (2 Double Ended Wrenches)	TP-Wrench 20-63
Wrench Set 20mm - 63mm (10 Double Ended Wrenches)	TP-Wrench Set
Crowsfoot Tool 20mm	CROWSFOOT 20MM
Crowsfoot Tool 25mm	CROWSFOOT 25MM
Crowsfoot Tool 32mm	CROWSFOOT 32MM
Crowsfoot Tool 40mm	CROWSFOOT 40MM
Crowsfoot Tool 50mm	CROWSFOOT 50MM
Crowsfoot Tool 63mm	CROWSFOOT 63MM





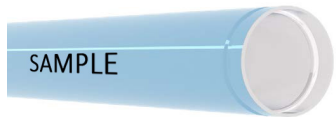
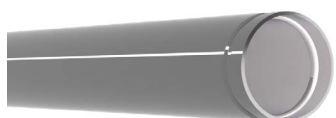
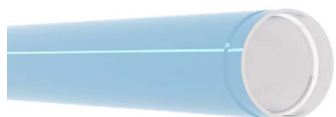
Description	Part Number
Thread Sealant 4oz (Food Grade)	PC-TC-SEAL-FG



Assembly Lube, 6oz (Food Grade)	PC-TC-LUBE-FG
---------------------------------	---------------

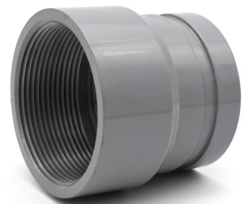


Demo Kit	DEMO-KIT
----------	----------



Description	Part Number
73mm - Tubing Blue (16ft Length)	TC1-73-BLUE
90mm - Tubing Blue (16ft Length)	TC1-90 BLUE
115mm - Tubing Blue (16ft Length)	TC1-115-BLUE
168mm - Tubing Blue (16ft Length)	TC1-168-BLUE
220mm - Tubing Blue (16ft Length)	TC1-220-BLUE
73mm - Tubing Black (16ft Length)	TC1-73-BLACK
90mm - Tubing Black (16ft Length)	TC1-90-BLACK
115mm - Tubing Black (16ft Length)	TC1-115-BLACK
168mm - Tubing Black (16ft Length)	TC1-168-BLACK
220mm - Tubing Black (16ft Length)	TC1-220-BLACK
73mm - Tubing Grey (16ft Length)	TC1-73-GREY
90mm - Tubing Grey (16ft Length)	TC1-90-GREY
115mm - Tubing Grey (16ft Length)	TC1-115-GREY
168mm - Tubing Grey (16ft Length)	TC1-168-GREY
220mm - Tubing Grey (16ft Length)	TC1-220-GREY
75mm - Tubing Green (16ft Length)	TC1-73-GREEN
90mm - Tubing Green (16ft Length)	TC1-90-GREEN
115mm - Tubing Green (16ft Length)	TC1-115-GREEN
168mm - Tubing Green (16ft Length)	TC1-168-GREEN
220mm - Tubing Green (16ft Length)	TC1-220-GREEN
73mm - TruLink Tubing Blue INKED (16ft Length)	TC1-73-BLUE-INK
90mm - TruLink Tubing Blue INKED (16ft Length)	TC1-90-BLUE-INK
115mm - TruLink Tubing Blue INKED (16ft Length)	TC1-115-BLUE-INK
168mm - TruLink Tubing Blue INKED (16ft Length)	TC1-168-BLUE-INK
220mm - TruLink Tubing Blue INKED (16ft Length)	TC1-220-BLUE-INK

Description	Part Number
Threaded Adapter, 73mm TUBE to 1-1/2" MNPT (No Coupling)	TC3-73-24M
Threaded Adapter, 73mm TUBE to 2" MNPT (No Coupling)	TC3-73-32M
Threaded Adapter, 73mm TUBE to 2-1/2" MNPT (No Coupling)	TC3-73-40M
Threaded Adapter, 73mm TUBE to 2-1/2" FNPT (No Coupling)	TC3-73-40F
Threaded Adapter, 90mm Tube to 1-1/2" MNPT (No Coupling)	TC3-90-24M
Threaded Adapter, 90mm Tube to 2" MNPT (No Coupling)	TC3-90-32M
Threaded Adapter, 90mm Tube to 2-1/2" MNPT (No Coupling)	TC3-90-40M
Threaded Adapter, 90mm Tube to 3" MNPT (No Coupling)	TC3-90-48M
Threaded Adapter, 90mm Tube to 3" FNPT (No Coupling)	TC3-90-48F
Threaded Adapter, 115mm Tube to 2" MNPT (No Coupling)	TC3-115-32M
Threaded Adapter, 115mm Tube to 2-1/2" MNPT (No Coupling)	TC3-115-40M
Threaded Adapter, 115mm Tube to 3" MNPT (No Coupling)	TC3-115-48M
Threaded Adapter, 115mm Tube to 4" MNPT (No Coupling)	TC3-115-64M
Threaded Adapter, 115mm Tube to 4" FNPT (No Coupling)	TC3-115-64F



Description
Part Number

Standard (176F) 150# Stainless Steel Flange:



73mm Tube To ANSI 2.5"
(Kit w/ THRD ADPT GSK and Bolts, No Coupling)

TC4-73

90mm Tube To ANSI 3"
(Kit w/ THRD ADPT GSK and Bolts, No Coupling)

TC4-90

115mm Tube To ANSI 4"
(Kit w/ THRD ADPT GSK and Bolts, No Coupling)

TC4-115

168mm Tube To ANSI 6"
(Kit w/GSK and Bolts, No Coupling)

TC4-168

220mm Tube To ANSI 8"
(Kit w/GSK and Bolts, No Coupling)

TC4-220

Flange, 73mm Tube to ANSI 2.5"

100012-40

Flange, 90mm Tube to ANSI 3"

100012-48

Flange, 115mm Tube to ANSI 4"

100012-64

Flange, 168mm Tube to ANSI 6"

100012-96

Flange, 220mm Tube to ANSI 8"

100012-128

High-Temp (300F) 150# Stainless Steel Flange:



73mm Tube To ANSI 2.5"
(Kit w/ THRD ADPT GSK and Bolts, No Coupling)

TC4-73-HT

90mm Tube To ANSI 3"
(Kit w/ THRD ADPT GSK and Bolts, No Coupling)

TC4-90-HT

115mm Tube To ANSI 4"
(Kit w/ THRD ADPT GSK and Bolts, No Coupling)

TC4-115-HT

168mm Tube To ANSI 6"
(Kit w/GSK and Bolts, No Coupling)

TC4-168-HT

220mm Tube To ANSI 8"
(Kit w/GSK and Bolts, No Coupling)

TC4-220-HT

High-Temp Flange, 73mm Tube to ANSI 2.5"

100012-40-O

High-Temp Flange, 90mm Tube to ANSI 3"

100012-48-O

High-Temp Flange, 115mm Tube to ANSI 4"

100012-64-O

High-Temp Flange, 168mm Tube to ANSI 6"

100012-96-O

High-Temp Flange, 220mm Tube to ANSI 8"

100012-128-O

Description	Part Number
73mm Flange Bolt Kit, Bolts and Gasket	TC4-73-BK
90mm Flange Bolt Kit, Bolts and Gasket	TC4-90-BK
115mm Flange Bolt Kit, Bolts and Gasket	TC4-115-BK
168mm Flange Bolt Kit, Bolts and Gasket	TC4-168-BK
220mm Flange Bolt Kit, Bolts and Gasket	TC4-220-BK
Reducer, 90mm TUBE to 73mm Tube (No Couplings)	TC19-90-73
Reducer, 115mm TUBE to 73mm Tube (No Couplings)	TC19-115-73
Reducer, 115mm Tube To 90mm Tube (No Couplings)	TC19-115-90
Reducer, 168mm Tube To 90mm Tube (No Couplings)	TC19-168-90
Reducer, 168mm Tube To 115mm Tube (No Couplings)	TC19-168-115
Reducer, 220mm Tube To 115mm Tube (No Couplings)	TC19-220-115
Reducer, 220mm Tube To 168mm Tube (No Couplings)	TC19-220-168
Straight Union Coupling 73mm Standard (176F)	TC2-73
Straight Union Coupling 90mm Standard (176F)	TC2-90
Straight Union Coupling 115mm Standard (176F)	TC2-115
Straight Union Coupling 168mm Standard (176F)	TC2-168
Straight Union Coupling 220mm Standard (176F)	TC2-220





Description	Part Number
Straight Union Coupling 73mm High-Temp (300F)	TC2-73-HT
Straight Union Coupling 90mm High-Temp (300F)	TC2-90-HT
Straight Union Coupling 115mm High-Temp (300F)	TC2-115-HT
Straight Union Coupling 168mm High-Temp (300F)	TC2-168-HT
Straight Union Coupling 220mm High-Temp (300F)	TC2-220-HT
Union Elbow 73mm w/ 2 couplings	TC6-73
Union Elbow 90mm w/ 2 couplings	TC6-90
Union Elbow 115mm w/ 2 couplings	TC6-115
Union Elbow 168mm w/ 2 couplings	TC6-168
Union Elbow 220mm w/ 2 couplings	TC6-220
Union Elbow, Street 73mm x 2.5" MNPT (w/ 1 Coupling)	TC7-73-40M
Union Elbow, Street 90mm x 3" MNPT (w/ 1 Coupling)	TC7-90-48M
Union Elbow 45 deg. 73mm w/ 2 couplings	TC8-73
Union Elbow 45 deg. 90mm w/ 2 couplings	TC8-90
Union Elbow 45 deg. 115mm w/ 2 couplings	TC8-115
Union Elbow 45 deg. 168mm w/ 2 couplings	TC8-168
Union Elbow 45 deg. 220mm w/ 2 couplings	TC8-220
Junction Tee 73mm w/ 3 couplings	TC9-73
Junction Tee 90mm w/ 3 couplings	TC9-90
Junction Tee 115mm w/ 3 couplings	TC9-115
Junction Tee 168mm w/ 3 couplings	TC9-168
Junction Tee 220mm w/ 3 couplings	TC9-220

Description	Part Number
Reducing Tee 73mm 3/4" FNPT w/ 2 couplings	TC10-73-12F
Reducing Tee 73mm 1" FNPT w/ 2 couplings	TC10-73-16F
Reducing Tee 73mm 1- 1/2" FNPT w/ 2 couplings	TC10-73-24F
Reducing Tee 73mm 2" FNPT w/ 2 couplings	TC10-73-32F
Reducing Tee 73mm 2 -1/2" FNPT w/ 2 couplings	TC10-73-40F
Reducing Tee 90mm 3/4" FNPT w/ 2 couplings	TC10-90-12F
Reducing Tee 90mm 1" FNPT w/ 2 couplings	TC10-90-16F
Reducing Tee 90mm 1-1/2" FNPT w/ 2 couplings	TC10-90-24F
Reducing Tee 90mm 2" FNPT w/ 2 couplings	TC10-90-32F
Reducing Tee 90mm 2 -1/2" FNPT w/ 2 couplings	TC10-90-40F
Reducing Tee 115mm 3/4" FNPT w/ 2 couplings	TC10-115-12F
Reducing Tee 115mm 1" FNPT w/ 2 couplings	TC10-115-16F
Reducing Tee 115mm 1-1/2" FNPT w/ 2 couplings	TC10-115-24F
Reducing Tee 90mm 1-1/2" FNPT w/ couplings	TC10-90-24F
Reducing Tee 90mm 2" FNPT w/ couplings	TC10-90-32F
Reducing Tee 90mm 2 -1/2" FNPT w/ couplings	TC10-90-40F
Reducing Tee 115mm 3/4" FNPT w/ couplings	TC10-115-12F
Reducing Tee 115mm 1" FNPT w/ couplings	TC10-115-16F
Reducing Tee 115mm 1-1/2" FNPT w/ couplings	TC10-115-24F
Reducing Tee 115mm 2" FNPT w/ couplings	TC10-115-32F
Reducing Tee 115mm 2 -1/2" FNPT w/ couplings	TC10-115-40F
Reducing Tee 168mm 3/4" FNPT w/ couplings	TC10-168-12F
Reducing Tee 168mm 1" FNPT w/ couplings	TC10-168-16F
Reducing Tee 168mm 1-1/2" FNPT w/ couplings	TC10-168-24F
Reducing Tee 168mm 2" FNPT w/ couplings	TC10-168-32F
Reducing Tee 168mm 2-1/2 FNPT w/ couplings	TC10-168-40F
Reducing Tee 90mm x 73mm w/ couplings	TC11-90-73
Reducing Tee 115mm x 73mm w/ couplings	TC11-115-73
Reducing Tee 115mm x 90mm w/ couplings	TC11-115-90
Reducing Tee 168mm x 73mm w/ couplings	TC11-168-73
Reducing Tee 168mm x 90mm w/ couplings	TC11-168-90
Reducing Tee 168mm x 115mm w/ couplings	TC11-168-115
Reducing Tee 220mm x 73mm w/ couplings	TC11-220-73
Reducing Tee 220mm x 90mm w/ couplings	TC11-220-90
Reducing Tee 220mm x 115mm w/ couplings	TC11-220-115
Reducing Tee 220mm x 168mm w/ couplings	TC11-220-168





Description	Part Number
Outlet, Saddle Clamp Reducer 73mm X 1/2" FNPT	TC13-73-08F
Outlet, Saddle Clamp Reducer 73mm X 3/4" FNPT	TC13-73-12F
Outlet, Saddle Clamp Reducer 73mm X 1" FNPT	TC13-73-16F
Outlet, Saddle Clamp Reducer 73mm X 1.5" FNPT	TC13-73-24F
Outlet, Saddle Clamp Reducer 90mm X 3/4" FNPT	TC13-90-12F
Outlet, Saddle Clamp Reducer 90mm X 1" FNPT	TC13-90-16F
Outlet, Saddle Clamp Reducer 90mm X 1.5" FNPT	TC13-90-24F
Outlet, Saddle Clamp Reducer 90mm X 2" FNPT	TC13-90-32F
Outlet, Saddle Clamp Reducer 115mm X 3/4" FNPT	TC13-115-12F
Outlet, Saddle Clamp Reducer 115mm X 1" FNPT	TC13-115-16F
Outlet, Saddle Clamp Reducer 115mm X 1.5" FNPT	TC13-115-24F
Outlet, Saddle Clamp Reducer 115mm X 2" FNPT	TC13-115-32F
Outlet, Saddle Clamp Reducer 168mm X 1 1/2" FNPT	TC13-168-24F
Outlet, Saddle Clamp Reducer 168mm X 2" FNPT	TC13-168-32F
Outlet, Saddle Clamp Reducer 220mm X 2" FNPT	TC13-220-32F
Outlet, Saddle Clamp Reducer 168mm X 90mm Grooved (No Coupling)	TC13-168-90
Outlet, Saddle Clamp Reducer 168mm X 115mm Grooved (No Coupling)	TC13-168-115
Outlet, Saddle Clamp Reducer 220mm X 73mm Grooved (No Coupling)	TC13-220-73
Outlet, Saddle Clamp Reducer 220mm X 90mm Grooved (No Coupling)	TC13-220-90
Outlet, Saddle Clamp Reducer 220mm X 115mm Grooved (No Coupling)	TC13-220-115
Butterfly Valve, Nitrile-Lined, 73mm w/couplings	100700-70-NL
Butterfly Valve, Nitrile-Lined, 90mm w/couplings	100700-90-NL
Butterfly Valve, Nitrile-Lined, 115mm w/couplings	100700-115-NL
Butterfly Valve, Nitrile-Lined, 168mm w/couplings	100700-168-NL
Saddle Drill 73mm (No Drill Jig Required)	TC-Drill Bit 73
Saddle Drill 90mm to 115mm (No Drill Jig Required)	TC-Drill Bit 90-115
Saddle Drill 168mm to 220mm (No Drill Jig Required)	TC-Drill Bit 168-220

Description	Part Number
Plug Cap 73mm Aluminum (No Coupling)	TC20-73
Plug Cap 90mm Aluminum (No Coupling)	TC20-90
Plug Cap 115mm Aluminum (No Coupling)	TC20-115
Plug Cap 168mm Aluminum (No Coupling)	TC20-168
Plug Cap 220mm Aluminum (No Coupling)	TC20-220
Plug Cap 73mm w/ 1/2" FNPT Port and Plug Aluminum (No Coupling)	TC20-73-08F
Plug Cap 90mm w/ 1/2" FNPT Port and Plug Aluminum (No Coupling)	TC20-90-08F
Plug Cap 115mm w/ 1/2" FNPT Port and plug Aluminum (No Coupling)	TC20-115-08F
Plug Cap 168mm w/ 1/2" FNPT Port and Plug Aluminum (No Coupling)	TC20-168-08F
Plug Cap 220mm w/ 1/2" FNPT Port and Plug Aluminum (No Coupling)	TC20-220-08F
Butterfly Valve, 73mm, Lugged, Kit w/ (2) Flanges, (2) THRD ADPT, (2) Bolts and (2) Couplings, Standard (176F)	TC25-73
Butterfly Valve, 90mm, Lugged, Kit w/ (2) Flanges, (2) THRD ADPT, (2) Bolts and (2) Couplings, Standard (176F)	TC25-90
Butterfly Valve, 115mm, Lugged, Kit w/ (2) Flanges, (2) THRD ADPT, (2) Bolts and (2) Couplings, Standard (176F)	TC25-115
Butterfly Valve, 168mm, Lugged, Kit w/ (2) Flanges, (2) THRD ADPT, (2) Bolts and (2) Couplings, Standard (176F)	TC25-168
Butterfly Valve, 220mm, Lugged, Kit w/ (2) Flanges, (2) THRD ADPT, (2) Bolts and (2) Couplings, Standard (176F)	TC25-220
Butterfly Valve, 90mm, Lugged, Standard (176F)	TC25-73-01 TC25-90-01
Butterfly Valve, 115mm, Lugged, Standard (176F)	TC25-115-01
Butterfly Valve, 168mm, Lugged, Standard (176F)	TC25-168-01
Butterfly Valve, 220mm, Lugged, Standard (176F)	TC25-220-01

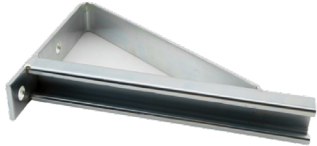




Description	Part Number
Butterfly Valve, 73mm, Lugged, High-Temp (300F)	TC25-73-01-HT
Butterfly Valve, 90mm, Lugged, High-Temp (300F)	TC25-90-01-HT
Butterfly Valve, 115mm, Lugged, High-Temp (300F)	TC25-115-01-HT
Butterfly Valve, 168mm, Lugged, High-Temp (300F)	TC25-168-01-HT
Butterfly Valve, 220mm, Lugged, High-Temp (300F)	TC25-220-01-HT
Replacement Full Face Flange Gasket 73mm, Standard (176F) Nitrile	TC4-73-GSK
Replacement Full Face Flange Gasket 90mm, Standard (176F) Nitrile	TC4-90-GSK
Replacement Full Face Flange Gasket 115mm, Standard (176F) Nitrile	TC4-115-GSK
Replacement Full Face Flange Gasket 168mm, Standard (176F) Nitrile	TC4-168-GSK
Replacement Full Face Flange Gasket 220mm, Standard (176F) Nitrile	TC4-220-GSK
Replacement Full Face Flange Gasket 73mm, High-Temp (300F) Viton	TC4-73-GSK-HT
Replacement Full Face Flange Gasket 90mm, High-Temp (300F) Viton	TC4-90-GSK-HT
Replacement Full Face Flange Gasket 115mm, High-Temp (300F) Viton	TC4-115-GSK-HT
Replacement Full Face Flange Gasket 168mm, High-Temp (300F) Viton	TC4-168-GSK-HT
Replacement Full Face Flange Gasket 220mm, High-Temp (300F) Viton	TC4-220-GSK-HT
Replacement Flange Gasket 73mm	100012-40-GSK
Replacement Flange Gasket 90mm	100012-48-GSK
Replacement Flange Gasket 115mm	100012-64-GSK
Replacement Flange Gasket 168mm	100012-96-GSK
Replacement Flange Gasket 220mm	100012-128-GSK
High-Temp Replacement Flange Gasket 73mm	100012-40-GSK-O
High-Temp Replacement Flange Gasket 90mm	100012-48-GSK-O
High-Temp Replacement Flange Gasket 115mm	100012-64-GSK-O
High-Temp Replacement Flange Gasket 168mm	100012-96-GSK-O
High-Temp Replacement Flange Gasket 220mm	100012-128-GSK-O

Description	Part Number
Replacement Coupling Seal 73mm, Standard (176F) Nitrile	TC2-73-SEAL
Replacement Coupling Seal 90mm, Standard (176F) Nitrile	TC2-90-SEAL
Replacement Coupling Seal 115mm, Standard (176F) Nitrile	TC2-115-SEAL
Replacement Coupling Seal 168mm Standard (176F) Nitrile	TC2-168-SEAL
Replacement Coupling Seal 220mm Standard (176F) Nitrile	TC2-220-SEAL
Replacement Coupling Seal 73mm, High-Temp (300F) Viton	TC2-73-SEAL-HT
Replacement Coupling Seal 90mm, High-Temp (300F) Viton	TC2-90-SEAL-HT
Replacement Coupling Seal 115mm, High-Temp (300F) Viton	TC2-115-SEAL-HT
Replacement Coupling Seal 168mm High-Temp (300F) Viton	TC2-168-SEAL-HT
Replacement Coupling Seal 220mm High-Temp (300F) Viton	TC2-220-SEAL-HT
Bracket Hanger (3/8" female insert) 73-mm-Steel, Galv	TC-820-73
Bracket Hanger (3/8" female insert) 90-mm-Steel, Galv	TC-820-90
Bracket Hanger (3/8" female insert) 115mm-Steel	TC-820-115
Bracket Hanger (1/2" female insert with 3/8" adapter) 168mm-Steel, Galv	TC-820-168
Bracket Hanger (1/2" female insert with 3/8" adapter) 220mm-Steel, Galv	TC-820-220
Wire Hanger (Pack of 10 - 15 ft length) (3/8" Thread) Use w/ Bracket, Hanger	TP-831-06-PK10





Description	Part Number
Cantilever Wall Bracket 12", Strut Channel	TP-830
Cantilever Wall Bracket 18", Strut Channel	TP-831
Cantilever Wall Bracket w/ Pipe Strap & Bolts 73mm	TC-835-73
Cantilever Wall Bracket w/ Pipe Strap & Bolts 90mm	TC-835-90
Cantilever Wall Bracket w/ Pipe Strap & Bolts 115mm	TC-835-115
Cantilever Wall Bracket w/ Pipe Strap & Bolts 168mm	TC-835-168
Cantilever Wall Bracket w/ Pipe Strap & Bolts 220mm	TC-835-220
Manual Grooving Tool, 73mm-168mm	TC-GROOVING TOOL M
Powered Floor Standing Groove Tool 73mm-220mm (P.O.R)	TC-GROOVING TOOL P
Purchase and Rental available, Does not include Power Drive, Roller Stands, Tube cutter etc...call for details (704) 947-6966	

Description	Part Number
Depth Marking Gauge Kit 73mm-220mm	TC-DMG-KT
Groove Gage, 73mm-220mm	TC-GROOVE-TAP
Thread Sealant 4oz (Food Grade)	PC-TC-SEAL-FG
Assembly Lube, 6oz (Food Grade)	PC-TC-LUBE-FG
Demo Kit	DEMO-KIT





 *American Pipe. American Engineered. American Assembled.*

About Applied System Technologies

AST was formed in 2005 to fill a substantial void in the market. Our driving force was a passion to provide a better solution than the black iron and copper plumbing products that were the industry standard for compressed air distribution. Our founders knew there had to be a better way. As we have grown, we continue to innovate, create better products, and hold fast to the personal attention we feel is central to our culture.



Applied System Technologies™

Website: appliedsystemtech.com

Phone: 704-947-6966

Email: info@appliedsystemtech.com



Nothing contained on these pages is intended to extend any warranty or representation, expressed or implied, regarding the product described herein. Any such warranties or other terms and conditions of sale of products shall be in accordance with Applied System Technologies standard terms and conditions for such products, which are available upon request. Product improvement is a continuing goal at Applied System Technologies. Designs and specifications are subject to change without notice or obligation.